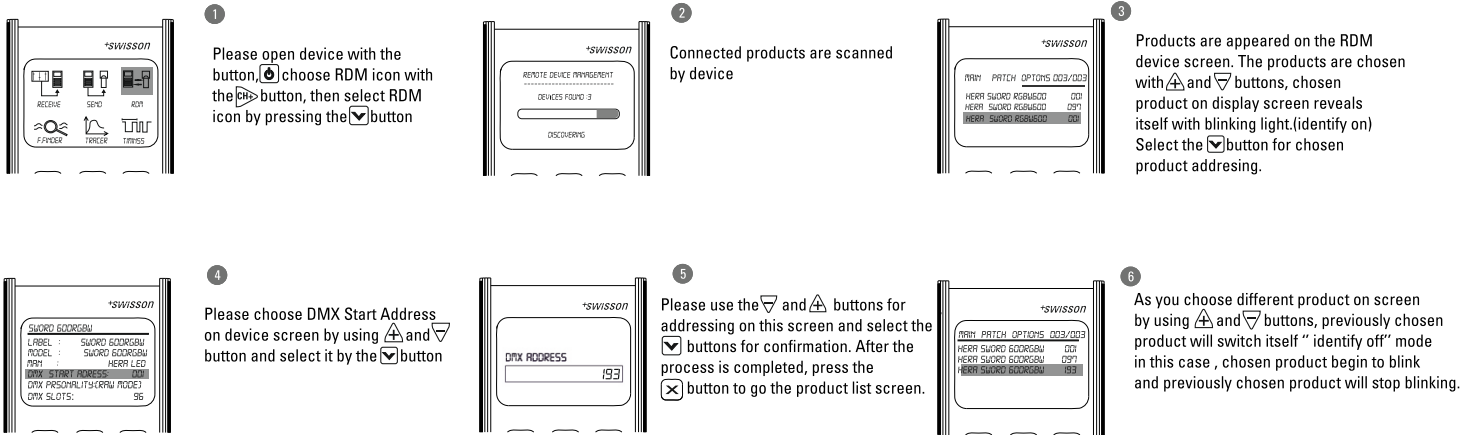
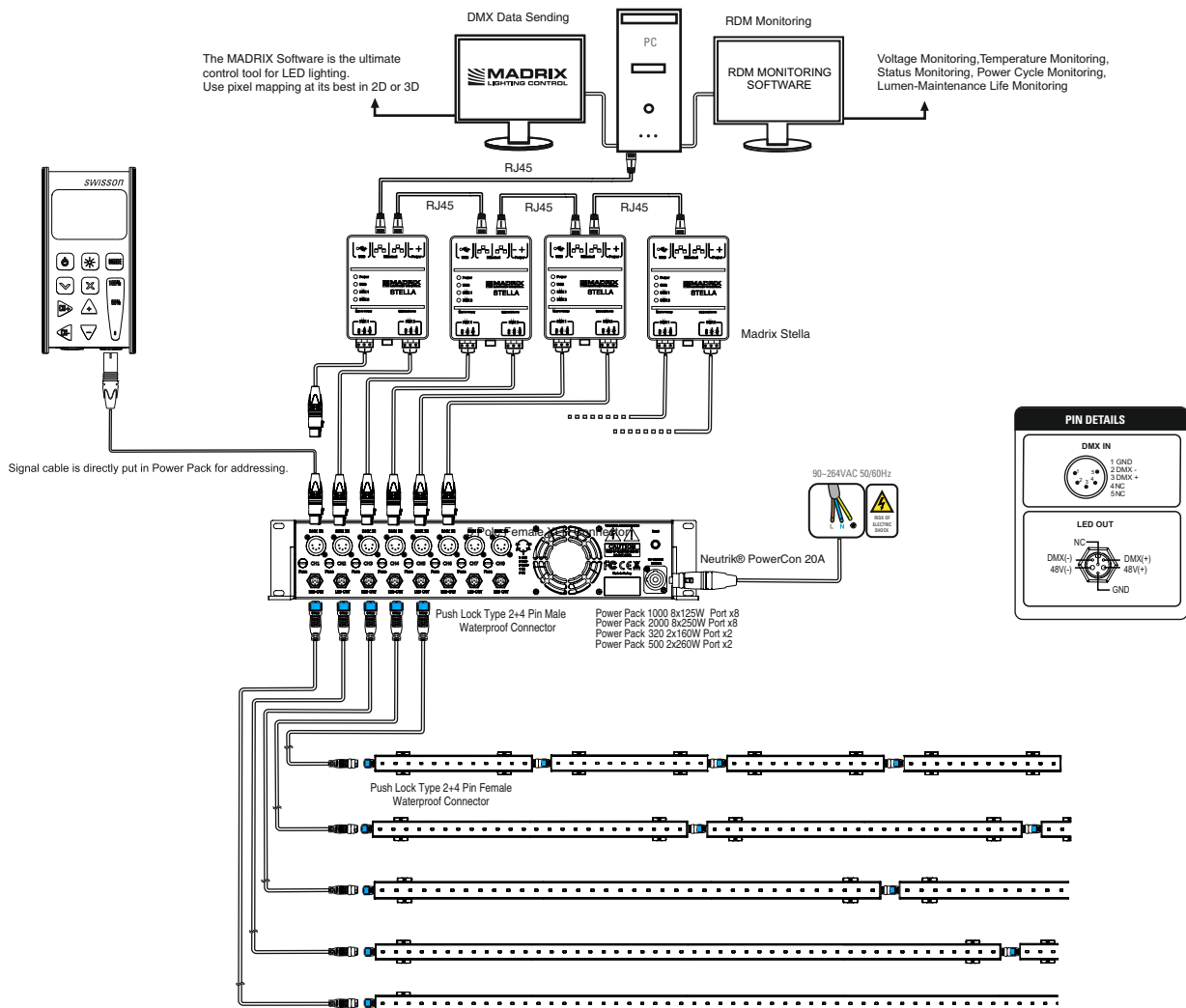


Group of RDM Addressing

As below There is a group of RDM addressing process which is made of Swisson XMT-350. Please, follow the numbered drawings for RDM addressing of our products. Please check the link for more details click here www.heraled.com/technic/1



RDM Addressing Block Diagram



Suggestions to Reach for DMX Control

- Total cable length should not be more than 3,900 ft (1200m) without buffering.
- Total fixture number should not be more than 32 pcs on a single line without buffering.
- It is recommended to use only connection cables with a characteristic impedance of 120 ohm, where the DMX + and DMX - data lines are intertwined and there is a ground link as a coaxial screen surrounding the inner cores.
- 120 Ω terminating resistor should connect between the DMX + and DMX - output connections of the last fixture.
- Do not insert a passive Y-split into the control cabling. Use a powered DMX splitter/buffer, if necessary to separate the control link in order feed fixtures in different locations. Make sure that the DMX + and DMX - connections do not get crossed at any point.